

E-Med Outcomes Demonstration CD

This CD contains a working copy of E-Med Outcomes ©.

This software allows for direct patient input into Validated Outcomes Measures from the American Academy of Orthopaedic Surgeons. It also includes the Musculoskeletal Functional Assessment both long and short forms. Use of the SF-36, which is included in the AAOS Outcomes measures, requires that you license for its use.

The software is designed to be run on a Kiosk. It contains on screen navigation to direct patients to the appropriate questionnaire, call-back utilities, direct as well as paper input capabilities and a simple Administration utility which will allow for data analysis.

Please note that this CD is a working version, but is meant to be a Demonstration Only.

MedAutoImporter © is a program component we have built to automatically import patient demographics into our database and share this data with E-Med Outcomes. Because of the complex differences between office networks and billing systems, we have not included this. Please use the test patients found below to understand how the program functions and its capabilities.

Password is set to “admin” for the exit from the main screen. To enter the Administration area, you may need to use “davinci” as these may have not been set the same.

For more information, please contact me at jdgoldstein@mindspring.com or call me at (401) 729-9400 office, (401) 785-5430 digital page.

eOutcomes Installation

1. Insert the eOutcomes CD-ROM
2. Click Start and choose Run. The Run dialog displays.
3. In the Run dialog, enter the CD-ROM drive's letter and add :\\setup.exe
4. Click OK to begin installation.
5. Follow the on-screen prompts and enter the necessary information when required.

Setting up eOutcomes Software

After the installation, all necessary configuration should have been done for you. eOutcomes should be ready for you to run without any difficulty. If you have a problem running eOutcomes, you may alternatively setup the eOutcomes System manually. The following directions are setup instructions for each of the eOutcomes components:

Setting up eOutcomes Patient Data Entry System

1. Select **Start | Programs | eOutcomes | eOutcomes Setup**

2. Follow the on-screen prompts:
 - a. Specify an administration password of your choice, and click Next.
 - b. When prompted for Patients database, enter the Patients ODBC database name (The default is **Turbodoc Database**) then press Next.
 - c. When prompted for Results database, enter the Results ODBC database name (The default is **Outcomes Database**) then press Next.
 - d. Choose “**Via ODBC Connection**” then press Next
 - e. When prompted for Forms database, enter the Forms ODBC database name (**Outcomes Forms**) then press Next.
 - f. When prompted for Theme File name, enter “**SoftBlue.ini**”, then select “Auto Find...” to automatically find the file for you from within your system. Once it successfully finds the file, press Next.
 - g. Press Finish to conclude the Setup.
 - h. If this is unsuccessful, or if another patient database is to be utilized, ODBC may be manually configured. This is done by:
3. Selecting **Start | Settings | Control Panel | ODBC | System DSN**
 - a. To ADD a connection click ‘Add’ on the right upper side of the ODBC Window.
 - b. Click Microsoft mdb driver (or type of file to connect to).
 - c. Type the ‘Data Source Name’ into the upper box, and click ‘Select’
 - d. This will allow you to navigate to the appropriate file.
 - e. Example: C:\Program Files\eOutcomes Apps\Outcomes\Data\plist32.mdb

Setting up eOutcomes Administration

1. Select **Start | Programs | eOutcomes | eOutcomes Administration**. eOutcomes Administration will start.
2. Once Started, Select **File | Setup Admin...**
3. Follow the on-screen prompts:
 - a. When prompted for Patients database, enter the Patients ODBC database name (the default is **Turbodoc Database**) then press Next.
 - b. When prompted for Results database, enter the Results ODBC database name (the default is **Outcomes Database**) then press Next.
 - c. When prompted for eOutcomes.exe location, enter the physical location of the eOutcomes.exe.
(e.g. C:\ProgramFiles\Outcomes Apps\Outcomes\Outcomes.exe)
 - d. Press Finish to conclude the setup.

Setting up eOutcomes Form Designer

1. Select **Start | Programs | eOutcomes | eOutcomes Form Designer**. eOutcomes Form Designer will start.
2. Once Started, select **File | Setup...**(click the open file folder) and navigate to:
C:\Program Files\Outcomes Apps\Outcomes\Outcomes.exe)

3. Press Finish to conclude setup.

eOutcomes Introduction

eOutcomes System consists of three interacting applications;

1. Patient Data Entry System (eOutcomes.exe)
2. Form Designer (FormDesigner.exe)
3. Data Administration (eOutcomesadmin.exe)

Patient Data Entry System (eOutcomes.exe)

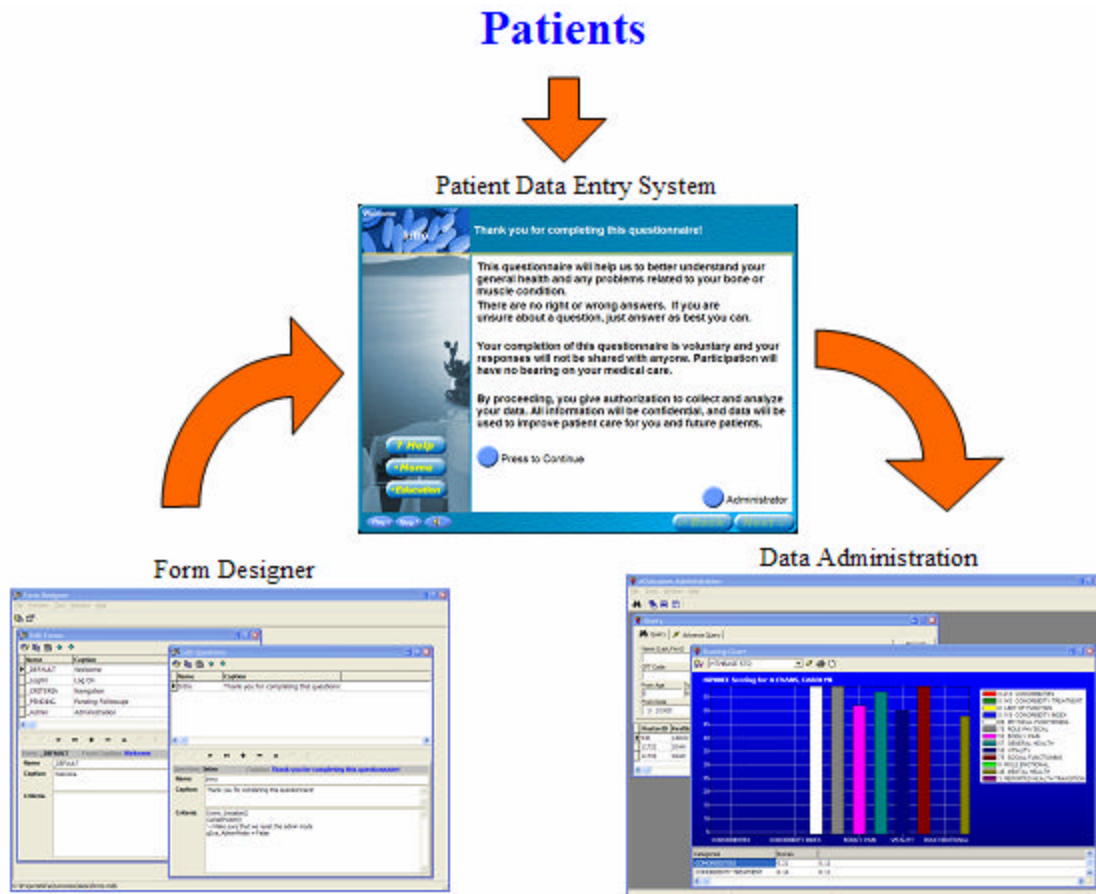
This is the Front-End application that is used to input the Outcomes data by the patients. It is designed to be simple and easy to use. Input is most easily achieved with a 17 inch touch screen monitor set at 800x600 pixels. Alternatively, a “Fast Point Pen” can be utilized with a standard screen and a computer with a free PCI slot. These can be obtained from FastPoint Technology (www.ftgdata.com)

Form Designer (FormDesigner.exe)

Form Designer is used for creating input Forms for the Patient Data Entry System.

Data Administration (eOutcomesadmin.exe)

Data Administration is used querying and analyzing/charting Outcomes Data.



Relationship Between eOutcomes Applications

Evaluating eOutcomes System

We have provided a sample set of Patients and Outcomes Data that you can immediately use for evaluating the system.

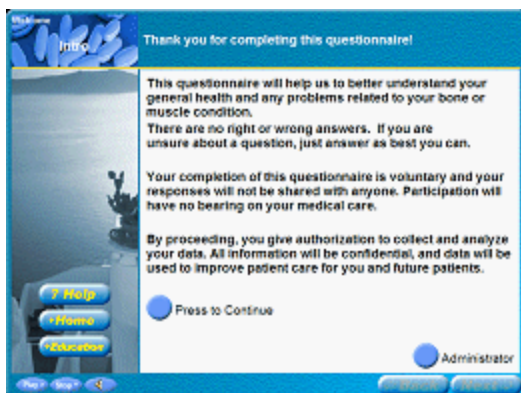
Evaluating Patient Data Entry System (eOutcomes.exe)

The Patient Data Entry System has a security feature which allows only valid patients to enter Outcomes data into their database. This is linked to the demographic data derived from a medical billing system. This sample program does not have the associated patient importer (MedAutoImporter) which will on a preset interval, import patients from the medical billing system. The Initial Screen will ask for The Patient's User Name (first name or last name) and the Last 4-digits of his/her social security number. We have provided you with the following sample patients:

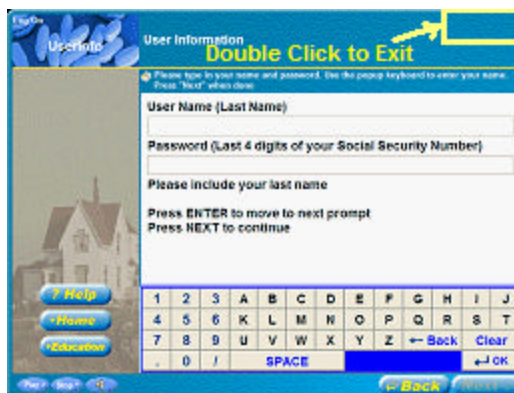
LastName, FirstName	Social Security No.
DOE, JANE	10000001
DOE, SANDRA	10000005
DRONN, DON A.	10000012
JONES, CATHERINE	10000003
JONES, MILDRED	10000008
LANE, LOIS	10000004
PATIENT, JANE	10000011
PATIENT, JOHN	10000009
PATIENT, PHYLLIS	10000010
PATIENT, SANDRA	10000006
PUBLIC, JANE Q.	10000002
PUBLIC, JOHN	10000007

Using the Patient Data Entry System:

1. Select **Start | Programs | eOutcomes | Patient Data Entry.**
2. Use the sample patients provided (see above patient list) to Log In.
3. To Exit, Double click on the Upper-Right Corner Area. When prompted for the password, enter "your user password" (default is "admin"). The purpose of the password here is to protect the patient data entry screen from being tampered with. When the program is open, the screen is "locked".



Patients Data Entry System Sample Screen 1



Patients Data Entry System Sample Screen 2

Evaluating Data Administration (eOutcomesadmin.exe)

Data Administration allows you to analyze the Outcomes data already input by the patients. You can query data by specifying the desired patient criteria: FirstName, LastName, Age, Questions and etc. Once the data is queried, you can then plot the various kinds of scoring charts:

Questionnaire Scoring Chart.

Standard Deviation of the Scores. *

* Currently we provide you with Standard Deviation for SF36 Scores. (Baseline and Follow-up) for an example. All forms with associated scores are appropriately scored upon patient completion and are seen by the patient. These can also be queried by the physician and graphed. Additional scoring files may be created by the user in the Administration area as well.

Using Data Administration:

1. Select **Start | Programs | eOutcomes | Data Administration**
2. When this starts, you should see a query window (Fig. 1)
3. Under Question , select HTHBASE (for SF36 questionnaire)
4. Select Execute to Perform the query.
5. Right-click on one of the records within the Data grid, Select Standard Deviation. (Fig. 2)

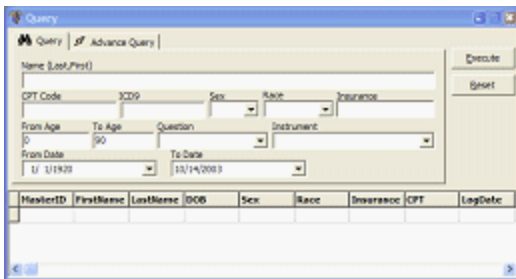
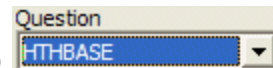


Fig 1: Data Administration query window

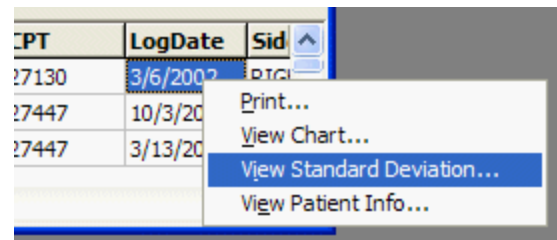


Fig 2: Data Administration popup menu

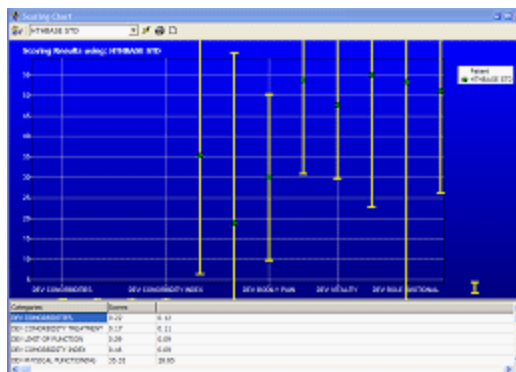


Fig 3: Standard Deviation Sample

Administration and Scoring Files

These are available by navigating to score files from the eOutcomes Patient data entry screen, and clicking 'Administration'. This opens several options which include:

- 1) Viewing or adding to the score files.
- 2) Manual Data input from paper forms for a specified date.
- 3) Call-Back Report prints out a list of all patients who are due for appointment for the coming week.
- 4) Manual Override Entry (to input data if the patient misses an interval by a day or two). Actual dates are constantly tracked and are therefore less important than an exact number of days from the preop evaluation.
- 5) Choosing which Validated Outcomes Measures are utilized. The default is set to navigate to the Orthopaedic Academy Forms which include the SF-36. Alternatively, the MFA may be chosen, or the Short Form MFA.