

Administration Utilities:

E-Outcomes Administration allows the user (Physician, Researcher) to query Patient Outcomes Data collected in order to find the best treatment based on Validated Outcomes Measures.

The administration utility contains:

- 1) The ability to query the data based on standard parameters (age, sex, race, dates of service, CPT code of treatment, Insurance, etc.
- 2) Scoring files which can be opened from the File menu. These are the scoring schemes associated with the Valid Outcomes Measurement being evaluated.
- 3) Statistical Analysis of data and comparison to the local population or national data norms.

The query is performed by entering the desired variables for the specific query. "Execute" runs the query process and the list of patients which appear are this subset.

An individual patient can be scored by right clicking on the file and the scores are printed along with a histogram which is a visual representation of the data.

Comparison to the local population may be done by clicking on "HlthBaseStd" (Standard Deviation of Health Base) as an example and then the lightening bolt icon to run the analysis.

This will overlay a Mean and Standard Deviation Bar upon the Patient Histogram for comparison to the local data norm.

Data may be printed to a local or network printer attached.

Data Administration allows you to analyze the Outcomes data already input by the patients. You can query data by specifying the desired patient criteria: FirstName, LastName, Age, Questions and etc. Once the data is queried, you can then plot the various kinds of scoring charts:

- Questionnaire Scoring Chart.
- Standard Deviation of the Scores. *

* Currently we provide you with Standard Deviation for SF36 Scores. (Baseline and Follow-up) for an example. All forms with associated scores are appropriately scored upon patient completion and are seen by the patient. These can also be queried by the physician and graphed. Additional scoring files may be created by the user in the Administration area as well.

Using Data Administration:

1. Select **Start | Programs | eOutcomes | Data Administration**
2. When this starts, you should see a query window (Fig. 1)
3. Under Question , select HTHBASE (for SF36 questionnaire)
4. Select Execute to Perform the query.
5. Right-click on one of the records within the Data grid, Select Standard Deviation. (Fig. 2)

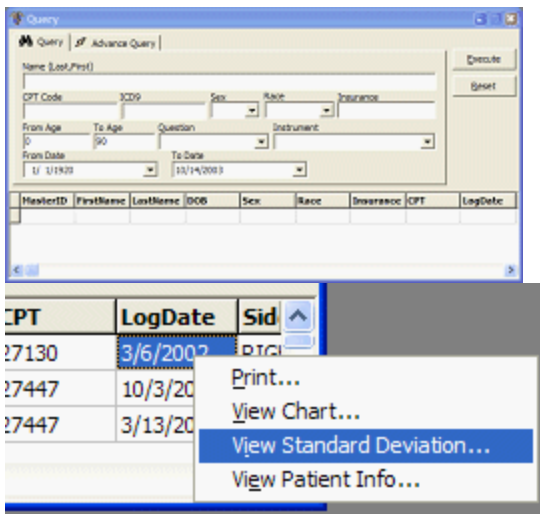
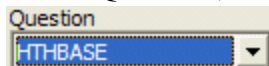


Fig 1: Data Administration query window

Fig 2: Data Administration popup menu

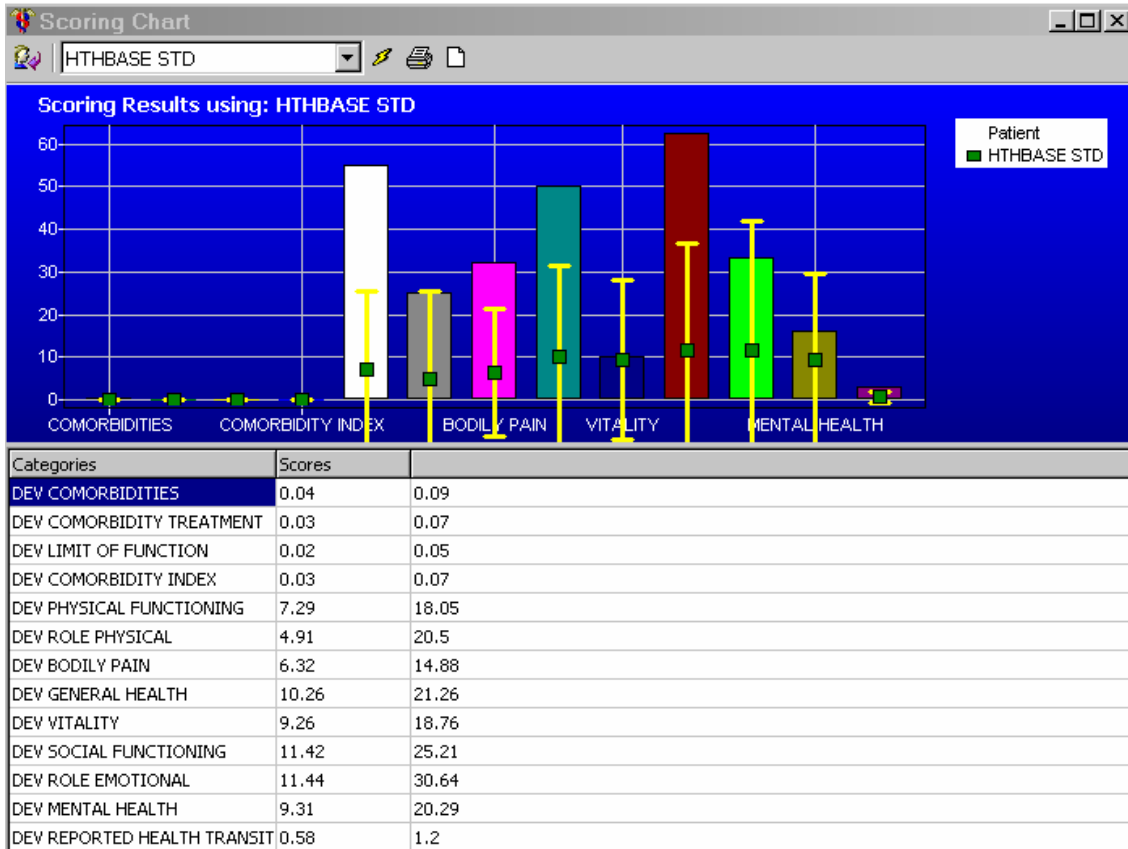


Figure 3: Example of Mean and Standard Deviation of Sample Population compared to Individual Patient Record.

Scoring of Patient Data:

Scoring Files are Located in the E-OutcomesAdmin\Tools\Edit Score File menu of the E-OutcomesAdmin File menu.

Double clicking on a particular score file opens it in text editor format. Here it can be built or manipulated to compute and print the results of any 9DQCDMG 2 XW/RP HV 0 HDXUHV..
4XHVMRODLUH

The rules for writing these score files are very simple. The working files in the directory may be utilized as examples for building further score files (.sco).

Utilizing simple mathematic equations, and the questions resultant values, the scoring is calculated.

The .sco file must have the **exact** name as the file which it is scoring.

Temporary variables can be defined in the scoring file which help to simplify the calculation.

After scoring, any Score value preceded by '_' will be printed as written.

an example would be (Q1+Q2+Q3+Q4+Q5) = GH

_General Health = GH/5 In this example, General health is the mean of Q1-Q5.

The resultant will print:

"General Health" =The value of the Avg of (Q1-Q5)